

PART OF THE SW. 1/4, OF SECTION 23, T.7N., R.1E., S.L.B. & M.
THE HIGHLANDS AT WOLF CREEK PHASE 7 FIRST AMENDMENT

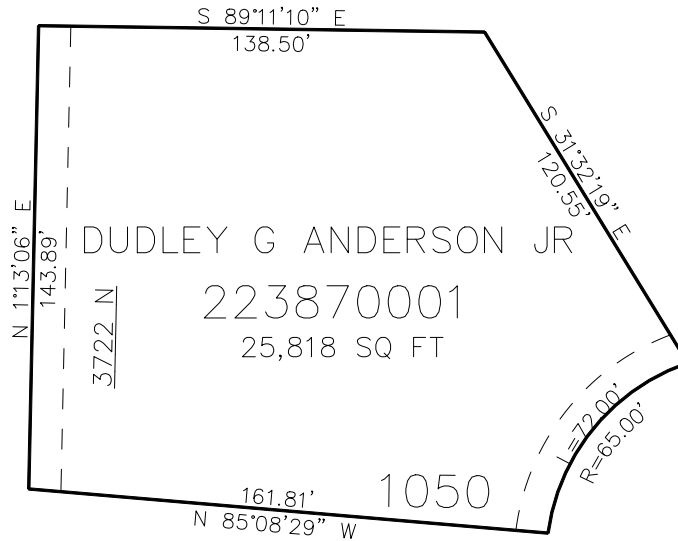
IN WEBER COUNTY
SCALE 1" = 30'

TAXING UNIT: 203

SEE PAGE 247

SEE PAGE 247

PORCUPINE RIDGE DRIVE



SEE PAGE 247

SEE PAGE 247

10' UTILITY & DRAINAGE EASEMENTS EACH
SIDE OF PROPERTY LINES AS INDICATED
BY DASHED LINES EXCEPT AS OTHERWISE
SHOWN.

FOR COMPLETE ENC DATA SEE
ORIGINAL DEDICATION PLAT IN
BOOK 89, PAGE 40 OF RECORDS.